

THE PERFECT BALANCE OF OUR FINISH IS RESPONSIBLE FOR THE BEAUTY AND REPUTATION OF MODEL® LOORING.

PREFINISHED

MODEL PLUS MATTE, SATIN AND SEMI-GLOSS • MODEL EXTRÊME®

Model Plus polyurethane is the result of several years of research and development to obtain a perfect balance between adhesion, abrasion, appearance and flexibility. These important properties add resistance to the flooring surface in addition to a remarkable gloss finish.

Adhesion

PG uses exclusive technology for exceptional bonding of polyurethane to wood during the production of flooring boards.

Abrasion

To ensure that flooring boards withstand the test of time, PG applies an exclusive product known as Model Plus polyurethane to each board. Model Plus contains aluminum oxide, and this innovation allowing Model boards to maintain their glossy appearance for a very long time.

Appearance

Industry experts know how to recognize Model® flooring. Board finish quality is so exceptional that it is comparable to the finish on high-end furniture. Nine coats of Model Plus polyurethane are successively applied, ultraviolet-cured and sanded to obtain the smoothest possible finish. Moreover, PG uses an anti-yellowing agent to inhibit the yellow discoloration of wood caused by UV rays.

Flexibility

While respecting hardness characteristics, PG has also achieved the best resistance/flexibility ratio in the industry. The flexibility of Model finishes prevents the finish from flaking in case of impact.

PRE-OILED

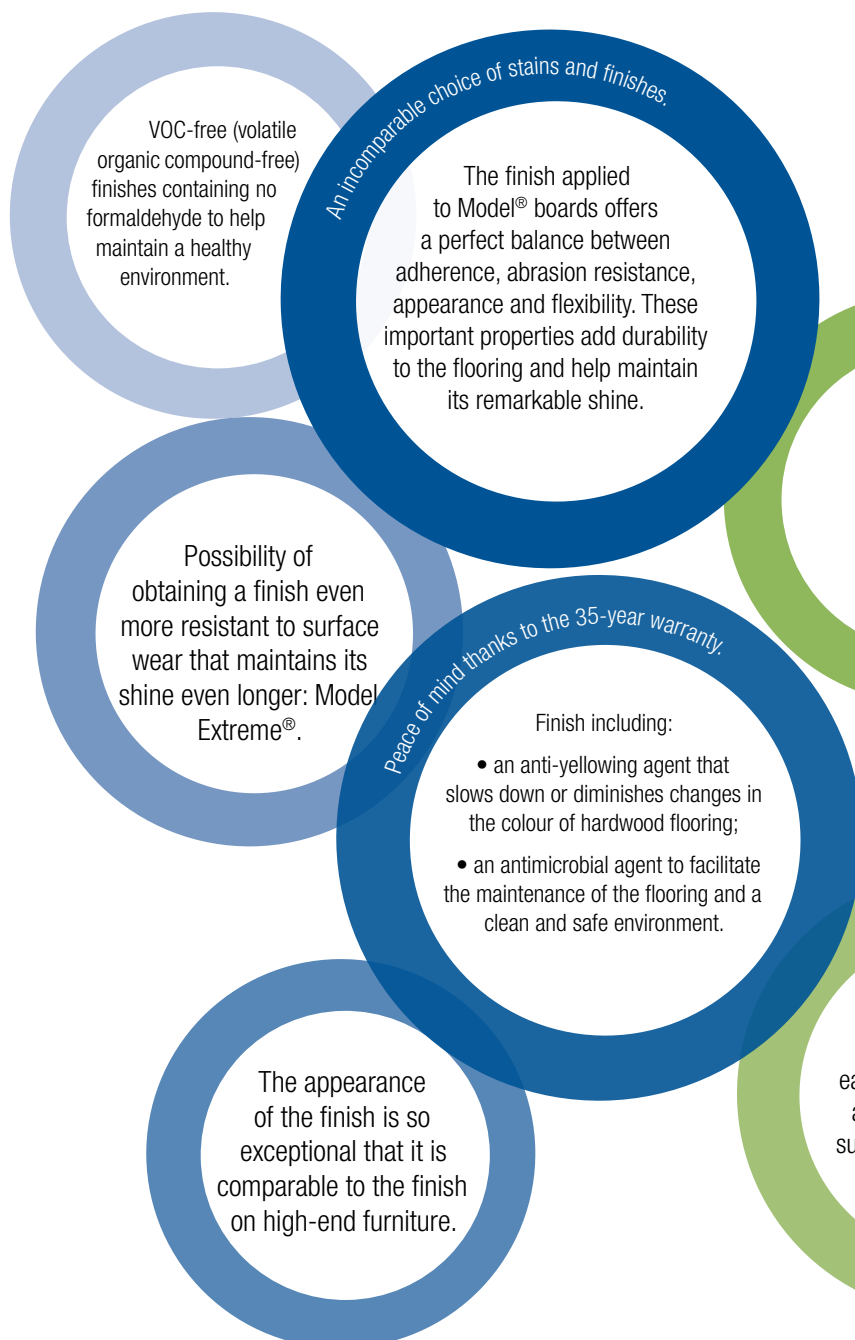
Pre-oiled UV floors are finished with natural renewable oil, an environmentally friendly choice. This process allows the wood to breathe and is popular because it is simple to maintain and repair. Pre-oiled flooring also enhances the grain of the wood, conferring a matt, rustic appearance..



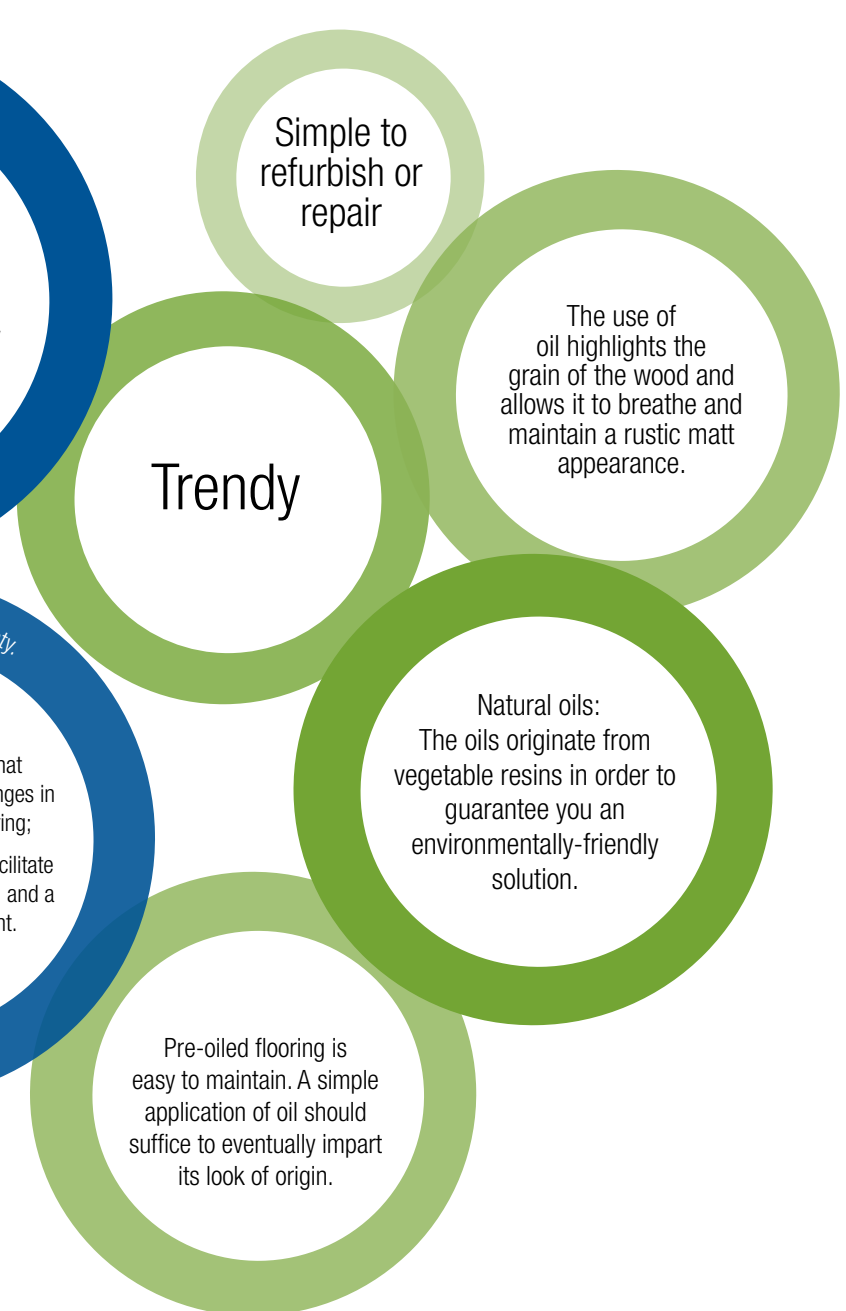
PREFINISHED OR PRE-OILED HARDWOOD FLOORING HAS SEVERAL ADVANTAGES :

SIMPLE TO MAINTAIN • NATURAL AND SAFE, MINIMIZING THE RISK OF ALLERGIES • PLEASING, WARM APPEARANCE MATCHING ALL DECORS
 READY TO BE INSTALLED, SO NO SANDING, VARNISHING OR OILING REQUIRED • COMES WITH AN ALMOST UNLIMITED SERVICE LIFE
 ENHANCES THE RESALE VALUE OF YOUR HOME • CONTRIBUTES TO LEED POINTS IF THE WOOD IS FSC® CERTIFIED • OFFERS AN EXCELLENT PRICE/QUALITY RATIO HAS A
 REDUCED CARBON FOOTPRINT DURING ITS ENTIRE SERVICE LIFE • TIMELESS, ENVIRONMENTALLY FRIENDLY

SPECIFIC ADVANTAGES OF PREFINISHED



SPECIFIC ADVANTAGES OF PRE-OILED





WHY CHOOSE THE MODEL PLUS OR MODEL EXTREME® FINISH?

Double aXion Tie Coat

Because the tie coat in the Model Plus and Model Extreme® finish formula consists of a unique bireactional agent that penetrates wood, preventing small surface cracks generally found in North American species and allowing better bonding of finish coats to the wood.

Double aXion, our tie coat formula, withstands moisture better than any other chemical agent in the industry. Its exclusive bonding process acts on both wood fibre and successive coats of finish.

A Sanding Technique Unique in North America

Sanding has a major impact on the physical properties of the tie coat. PG is the only flooring manufacturer in North America to use technology with real-time control over sanding band wear. Close follow-up allows operators to intervene at the slightest variation that might affect the properties of our Model Plus and Model Extreme® formulas. Precision ensures greater consistency, guaranteeing consumers the best possible product at all times.

Best Surface Scratch Resistance

The final top coat applied is simply the most scratch-resistant in the industry. It withstands 60 cycles of wear during the ASTM D-4060-01 test. This resistance allows conservation of the initial lustre of the flooring much longer than other products in the industry. Our proven formula contains unique nano-components to enhance surface resistance.

Under the Top Coat Lies a Protective Wall

While the last coat «super top coat» accounts for 8.5% of overall thickness, the top coat and all coats of sealant account for more than 70% of overall thickness and can withstand more than 550 cycles during the ASTM D-4060-01 test.

MODEL PLUS AND MODEL EXTREME® USE UV ACRYLATE-BASED STAINS

| ADVANTAGES OF THE MODEL PLUS AND MODEL EXTREME® UV ACRYLATE BASE | USE OF A WATER BASE (COMPETITORS) |
|--|--|
| Advantages of the Model Plus and Model Extreme® UV acrylate base. | Water in the base reacts negatively with natural wood fibre, causing it to expand and lead to ribbing on the finish. |
| More eco-friendly finish: because it is a solid, the UV acrylate base emits 50 times fewer VOCs than accepted under rigorous Canadian standards. | Co-solvents included in the water base evaporate (60%) releasing volatile organic contaminants into the atmosphere. |
| Greater colour transparency, better to appreciate the natural grain of the species chosen. This is known as natural wood tone conservation. | Water-based stains deaden the natural appearance of wood. Finish transparency is affected, preventing light from penetrating the wood to highlight its beauty. |
| Does not result in dirty water during cleaning. | An average-sized plant in North America using water bases generates up to 10 000 litres of dirty water per month. |
| More stable colour tones. | Evaporation in water bases alters product viscosity, making colour more unstable during production. |



YOU ARE UNIQUE, AND SO ARE WE !

ANTIMICROBIAL ADDITIVE IN ALL OUR PRODUCTS !

PG Hardwood Flooring is committed to ensure the safety and well-being of their clients and business partners. Therefore, we are very proud to announce that **we will be adding an antimicrobial additive to all our prefinished and pre-oiled products**. This exclusive proprietary patented technology made of silver ions held in a glass matrix is creating an efficient and natural antimicrobial product.

This surface protection serves as a complementary measure to daily cleaning without creating a sterile environment. It helps to reduce contamination of floors as well as the growth of microorganisms, like bacteria, germs, mould and mushrooms. Despite the addition of this additive in our prefinished and preoiled products, it remains important to keep good hygiene habits, like cleaning and disinfecting regularly to maintain a safe environment for you and your precious family members.

This additive does not protect people against existing bacteria, germs, mould, and mushrooms. Prefinished and preoiled floors must be cleaned regularly to avoid the presence of microorganisms.

This antimicrobial additive contributes to:

- **Eliminate micro-organisms** provoking contamination and infections;
- **Eliminate bacteria** responsible for odors and stains;
- **Protect the product from degradation**, prolonging the lifespan.



Model Extreme® is the very best varnish in the industry. No other product can match the surface wear resistance of Model Extreme®. Combining beauty and abrasion resistance was a major challenge for our team in charge of new products and R&D. We are very proud to have met this ultimate challenge.

Model Extreme® finish is available for all Model® collections. Refer to our product chart for more information.



MODEL EXTREME: IT'S GUARANTEED.

If flooring is maintained as per specifications in the Model Extreme® flooring maintenance guide and all conditions of warranty application are complied with, we will replace your flooring if it has lost its lustre completely within a 12-month period.

PG Hardwood Flooring is so convinced of the quality of its products that they are guaranteed against total wear, flaking and peeling for a period of forty (40) years for residential use and five (5) years for light commercial use. Light commercial use refers to "flooring installed in an administrative office, showroom, medical office, etc." To take advantage of this warranty, any project exceeding 1000 ft² must be submitted to Customer Service for approval.

WALNUT - UNSTAINED